



Dragon™ reader series

Industrial Hand-Held Laser Scanners

FEATURES

Dragon™ Desk:

- 2 meter drop resistance
- 3 optics available
- Man/machine interface: high tone beeper and strong illuminating LEDs

Dragon™ Mobile:

- Several models available:
 - With or without display
 - High Performance or Long Range optics system
 - 433MHz or 910MHz radio systems
- Point-to-Point & Multipoint transmission
- 100% compatible with STAR-System™
- 100% compatible with DLL6xxx-R
- Protective case and Desk/Wall holder included

APPLICATIONS

- Work-in-progress control
- Warehouse management
- Shipping and receiving control
- Cash & carry retail applications
- Fork lifts
- General use in harsh environments

GENERAL DESCRIPTION

Datalogic renews its range of industrial laser scanners introducing the **Dragon™** family: **Dragon™ Desk** and **Dragon™ Mobile**. Based on the same rugged and reliable mechanics of the well-established DLL6000 series, they have been completely renewed inside. Robustness and ergonomics, the main driver of our original project, remain unsurpassed: clearly audible beeper and bright "good read" LEDs for areas where noise levels are normally high; the aim mode, which helps point to the right code, has now been extended to the whole **Dragon™** family. Optical parts are completely suspended on shock absorbers and a careful choice of the body materials, such as the co-moulded rubber, protect the **Dragon™** from damage due to "falls".

New enhanced architecture, based on a M16 high-speed microprocessor, enables exceptional performance for promptness and reading speed of standard codes as well as the ability to read poorly printed and damaged codes. Puzzle Solver Technology™, a patent from Datalogic, adds further strength to the **Dragon™** powerful engine.

In all applications where mobility is a value, the new **Dragon™ M** represents the key to increase productivity and flexibility in the working area. **Dragon™ M** communicates through a low power, licence free radio in the 433 Mhz band (910 Mhz for USA version) and allows bi-directional communication between the base station and the host. **Dragon™ M** also includes a display and a 3 push-button keypad. Thanks to these features, the operator can receive information from the host, actively interact with the central system and visualise the code read. The cordless system offers scalable solutions to solve simple applications and complex projects:

- Point to point: each gun is associated with its own base station;
- Multipoint: many guns (up to 32) transmit data to one base station;
- Network: to cover a wide area, connecting up to 16 bases and 512 guns in automatic roaming simultaneously working.

Dragon™ M is 100% compatible with STAR-System™, the new Datalogic RF narrow band solution for mobile applications that provides the widest family of narrow band devices on the market.

DRAGON™ M, CONFIGURATIONS AND COMMUNICATION

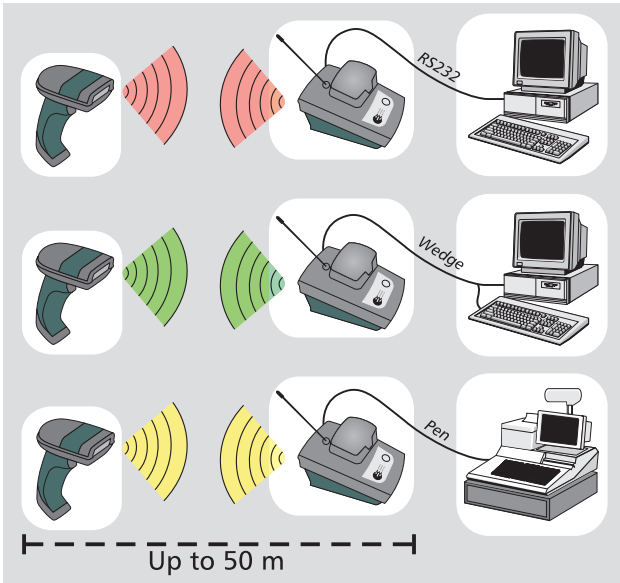


Fig. 1 - Dragon™ M point-to-point connection

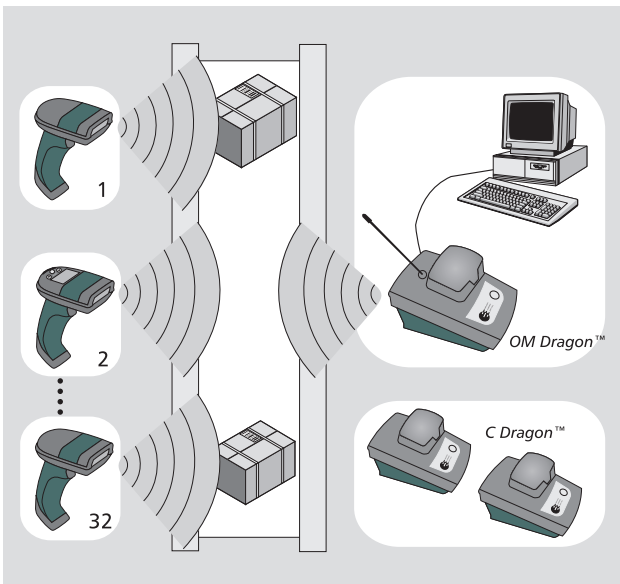


Fig. 2 - Dragon™ M multi-point connection

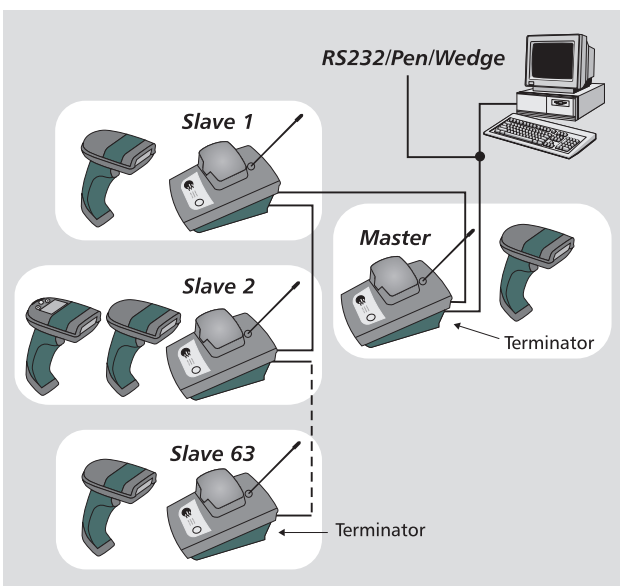


Fig. 3 - Dragon™ M network (Echelon kit required)

The basic configuration of the Dragon™ M system consists of one gun (Dragon™ M) and one cradle (OM-Dragon™). In this case, the configuration is called point-to-point (fig. 1) and in terms of use, has the same functionality of a standard gun without cable constraint.

When more than one gun (up to 32), is connected to a single cradle, a multi-point configuration is created (fig. 2). Multiple user data collection is available in the range of 50 mt with no cabling requirements.

The system can be completed with gun battery chargers, called C Dragon™, to make the whole system less expensive. In addition, different cradles can be connected to each other in a local area network configuration (fig. 3). In this case, the first cradle becomes the master, and can work together with up to 16 cradles, over a maximum length of 1200 meters. This possibility is available both with point-to-point and multipoint configurations.

Regarding communication between a remote gun and a cradle/host, two typical modes can be identified: the first with audible feedback from the cradle the second with visible and audible feedback from the host. The first mode is typical of the gun model without display (connection A - fig. 4). When a code is read the data is sent to the cradle and then to the host. The user hears a beep tone signaling that the code has been read and transmitted. A second short beep confirms that the CRADLE has correctly received the data (acknowledge). The cradle, offered with an integrated multistandard interface, immediately sends the data to the host (connection B) through the selected interface (WEDGE, PEN EMULATION or RS232). The second communication mode is possible when RS232 is selected (connection B). It provides the greatest advantage when used with the DRAGON™ M 101/D (with display). In this case, the system performs a virtual connection C, where the host can talk directly to the gun.

Furthermore, the new Dragon™ M is 100% compatible with the old DLL6xxx-R radio system. Simply by reading the "DLL6xxx-R compatible mode" command the Dragon™ M is made to behave like a DLL6xxx-R, therefore the existing configuration sequence and installation procedure can be applied without changes.

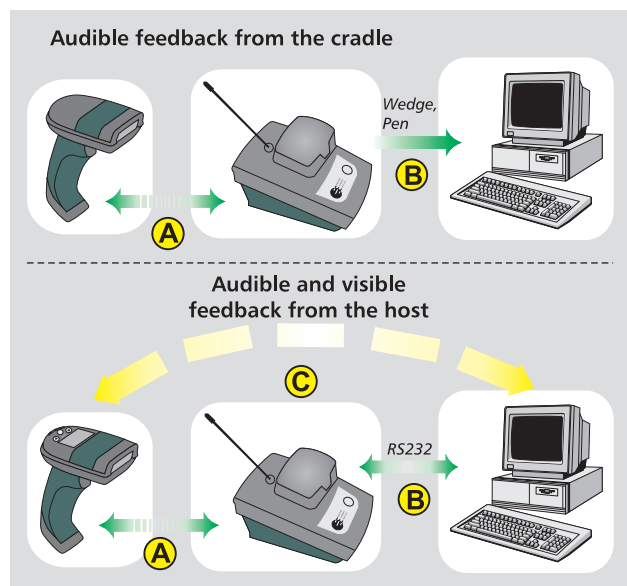
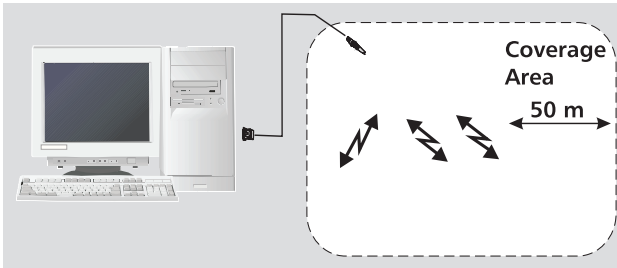
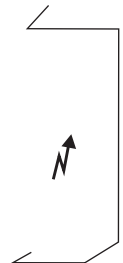


Fig. 4 - Dragon™ communication



RS232 Stand Alone Configuration



RS485 Network Configuration

Dragon™Desk

Manufacturing:

- Shop floor (WIP, Tracking, Quality Control)
- Warehousing

The Dragon™ D is particularly useful in all activities that take place on the shop floor in manufacturing environments; Typically consisting of assembly line material tracking, quality control and work-in-progress. These processes are performed at the highest level of accuracy and speed thanks to the new Dragon™ D reader. Its high mechanical resistance guarantees product duration and investment protection.

Dragon™Mobile

Transportation & Logistics: Sorting

Distribution & Retail: Cash & Carry (POS)

Manufacturing: Shop floor (WIP, Tracking); Warehousing (Fork-lift truck, picking and loading, inventory, shipping and receiving, back store)

The Dragon™ M system is designed for tough industrial use: in factory or warehouse applications is a winning card: loading docks, shipping and receiving, inventory control and work in progress are the main activities that gain an incredible advantage with freedom from cable constraint. Forklift truck applications also based on vehicle RF terminals receive advantages in using the Dragon™ M system as a local extension of their data capturing capability.

MODELS AND ACCESSORIES

MODEL	DESCRIPTION	ORDER NO.
Dragon D101 HP	High performance laser gun, with multistandard decoder and trigger 4 to 20 Vdc	902151230
Dragon D101 HD	High Density laser gun, with multistandard decoder and trigger 4 to 20 Vdc	902151240
Dragon D101 LR	Long Range laser gun, with multistandard decoder and trigger 4 to 20 Vdc	902151250
Dragon M101, 433Mhz	Cordless laser gun, High Performance scanning engine, no display	902201730
Dragon M101, 910 Mhz	Cordless laser gun, High Performance scanning engine, no display	902201760
Dragon M101/D, 433Mhz	Cordless laser gun, High Performance scanning engine, with display and keypad	902201740
Dragon M101/D, 910 Mhz	Cordless laser gun, High Performance scanning engine, with display and keypad	902201770
Dragon M101/D LR, 433Mhz	Cordless laser gun, Long Range scanning engine, with display and keypad	902201750
Dragon M101/D LR, 910 Mhz	Cordless laser gun, Long Range scanning engine, with display and keypad	902151780
ACCESSORIES		
OM Dragon™ RF (433 MHz)	Base station/charger with multistandard interface	90A301220
OM Dragon™ RF (910 MHz)	Base station/charger with multistandard interface	90A301230
OM Dragon™ RF B /C 433Mhz	Base station/charger with Echelon Network	90A301250
OM Dragon™ RF B /C 910Mhz	Base station/charger with Echelon Network	90A301260
C Dragon™	Smart battery charger	90A301240
B 6010- NM	3480 MWh Ni-Me-Hy battery set	90ACC1530
Cables	See HDD standard cable series	
ADP-102	5P din T-pass adapter	90ACC1030
ADP-103	6P minidin T-pass adapter	90ACC1040
ADP-200	USB adapter	90ACC1610
System Manual	Software manual for Dragon™ series	90ACC1855
SPC-6010	Desk/wall holder	90ACC1470
SPC-Dragon™	Desk/wall holder	90ACC1790
PC Dragon™	Protective case/belt coupler for Dragon™	90ACC1860
PG5 (110 Vac)*	Power supply unit	B9751038
PG5 (220 Vac)*	Power supply unit	B9751037
PG 110	Power supply unit	B9751057
PG 220	Power supply unit	B9751027

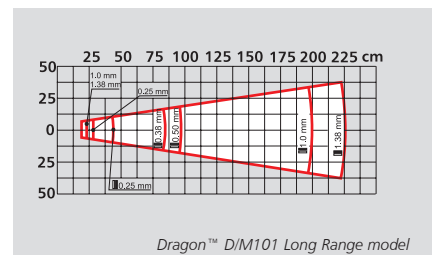
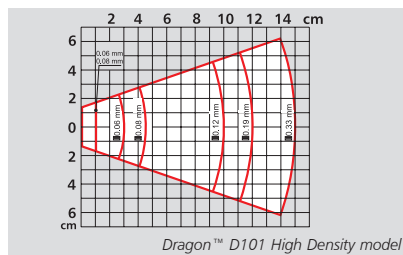
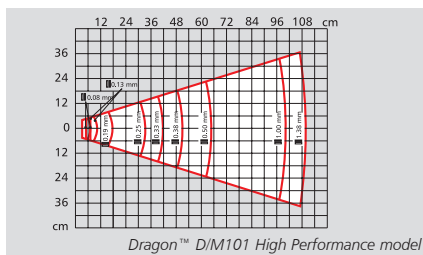
* Only available for Dragon™ D

SPECIFICATIONS

MODEL	DRAGON™ D	BIT RATE	19,200 baud (European models), 36,800 (USA models)
POWER SUPPLY	4 to 20 Vdc	EFFECTIVE RADIATED POWER	<10 mW (Europe); <1 mW (USA)
CONSUMPTION	250 mA @ 4 V; 170 mA @ 5 V; 40 mA @ 20 V	RADIO RANGE	Up to 50 m (Europe) - Up to 30 m (USA), depending on working area
OPERATING TEMPERATURE	-10 to 50 °C (14 to 122 °F)	MAX NR. COEXISTING SYSTEM	Max 32 devices per radio receiver; max 2000 devices in the same reading area
STORAGE TEMPERATURE	-20 to 60 °C (-4 to 140 °F)	MODELS	DRAGON™ D & DRAGON™ M
DROP RESISTANCE	Withstands repeated drops from 2 m onto a concrete surface	LIGHT SOURCE	VLD 630 - 670 nm (depending on the model)
WEIGHT	Approx. 270 g (9,53 oz)	MAX SCAN RATE	35 +/- 5 scans/sec
MODEL	DRAGON™ M	MAX RESOLUTION	0.08 mm: D101; 0.06 mm: D101; HD; 0.25 mm: D101 LR; 0.12 mm: M 101; 0.25 mm: M101 LR
BATTERY TYPE	NiMh (3480 mWh) (All AA NiCD and Alkaline batteries can also be used)	PRINT CONTRAST RATIO (min)	15% D101, 40% D101 HD, D101 LR 15% M101 40% M101 LR
DISPLAY (M101/D model only)	Graphic with backlight, 32 x 96 dots, and font dimension can be selected by the user (with default selection 4 lines x 16 columns)	READING ANGLE	Skew: +/-60; Pitch: 5 to 55, -5 to -55; Tilt: +/-20
KEYPAD (M101/D model only)	Membrane keypad with 3 keys	READING INDICATORS	Laser ON, Good Read, Beeper, Good transmission (Dragon™ M only)
RECHARGE TIME	2 hours	BAR CODES	2/5 family, Code 39 (plus Code 32, Cip 39), EAN/U.P.C., EAN 128, 128, Code 128, Code 93, CODABAR, TELEPEN, PLESSEY, Code 49, Code MSI, Code Delta IBM, Code 11, CODABLOCK, Code 16K, ISBN/ISSN, ISBT 128
OPERATING AUTONOMY	Over 60,000 with NiMh batteries (Test mode: 100 reads/min)	PROGRAMMING METHOD	Reading special bar codes S/W commands through the serial port Windows configuration program
OPERATING TEMPERATURE	-10 to 40 °C (14 to 122 °F)	Manual	RS 232, Wedge, Pen emulation
STORAGE TEMPERATURE	-20 to 50 °C (-4 to 122 °F)	Automatic (with RS 232)	Puzzle Solver™, data editing and data concatenation
DROP RESISTANCE	Withstands repeated drops from 1,8 m (M101), 1,5 m (M101/D) onto a concrete surface	Sm@rtSet™	ABS and polycarbonate, plus co-moulded rubber
WEIGHT	Approx. 340 g (12 oz)	INTERFACES	Immune to light exposure in offices and facilities, and direct exposure to sunlight
CRADLE	OM DRAGON™	ENHANCED FEATURES	90% non condensing
POWER SUPPLY	10 to 28 Vdc	CASE MATERIAL	Immune to water and dust
POWER CONSUMPTION	max. 8 W	AMBIENT LIGHT CONDITIONS	
READING INDICATORS	Battery charging (red), Charge completed (green) Power/Data (yellow)	HUMIDITY	
DIMENSIONS without antenna	185 X 115 X 104 mm (7.28 X 4.52 X 4.09 in)	ENVIRONMENTAL PROTECTION	
CASE MATERIAL	ABS		
WEIGHT	Approx. 600 g (21,1 oz)		
RADIO SPECIFICATIONS			
RADIO FREQUENCY	433.05- 434.79Mhz (Europe); 909.94- 910.06 Mhz (USA)		



READING DIAGRAMS



Product and company names and logos referenced may be either trademarks or registered trademarks of their respective companies.

We reserve the right to make modifications and improvements

Datalogic S.p.A.
Italy
Corporate Headquarters
Tel. +39 051/3147011
Fax +39 051/3147170
info@datalogic.it

Sales Italy
Tel. +39 051/3147011
Fax +39 051/3147170
venditeitalia@datalogic.it

Sales International
(Central and South America, Far East, Middle East - Africa)
Tel. +39 041/5986511
Fax +39 041/5986550
sales-intl@datalogic.it

Australia
Datalogic PTY LTD.
Tel. +61 3/95589299
Fax +61 3/95589233
sales@datalogic.com.au

Germany
Datalogic GmbH
Tel. +49 7026/6080
Fax +49 7026/5746
info@datalogic.de

Sweden
Datalogic AB
Tel. +46 40/385000
Fax +46 40/385001
info@datalogic.se

Austria
Datalogic Handelsges. mbH
Tel. +43 2236/258820
Fax +43 2236/258825
office@datalogic.co.at

Japan
Izumi Datalogic Co., Ltd.
Tel. +81 78/3033400
Fax +81 78/3033402
idlmrke@izumi-datalogic.co.jp

United Kingdom
Datalogic UK Ltd.
Tel. +44 1582/464900
Fax +44 1582/464999
enquiries@datalogic.demon.co.uk

Denmark
Datalogic A/S
Tel. +45 70/239970
Fax +45 70/239972
info@datalogic.se

Netherlands
Datalogic Optic Electronics BV
Tel. +31 346/572888
Fax +31 346/568736
info@datalogic.nl

U.S.A.
Datalogic Inc.
Tel. +1 859/6897000
Fax +1 859/3344970
info@datalogic.com

France
Datalogic France S.A.
Tel. +33 1/60921111
Fax +33 1/60921340
info@datalogic.fr

Spain
Datalogic Iberia
Tel. +34 91/3837755
Fax +34 91/3837962
diberia@datalogic.it

Datalogic Quality Partner

Datalogic Communication Division
Printed in Italy July 2002

